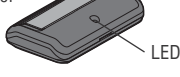


For use with Security+ 2.0® products. All Security+ 2.0® Garage Door Openers have a yellow Learn button and two yellow antennas. The code between the remote control and the receiver changes with each use, randomly accessing over a billion new codes. Refer to your product manual for the location of the learn button.

NOTE: Your product may look different than the products illustrated in this manual.

Single Button Remote Control
Model 891LM



LED

3-Button Remote Control
Model 893LM



LED

⚠ WARNING

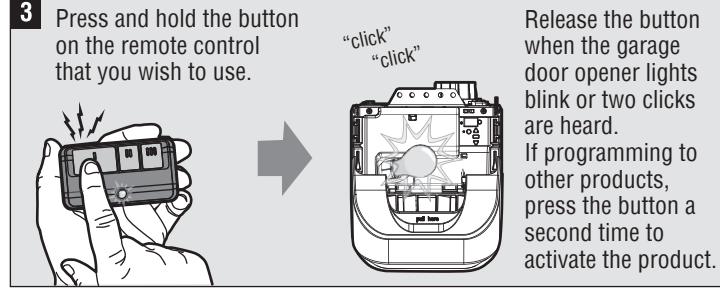
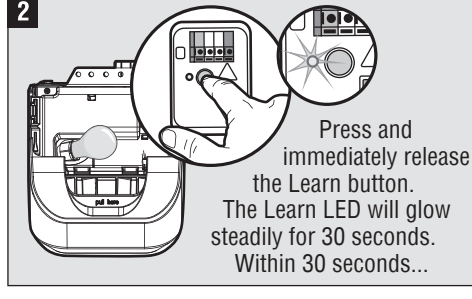
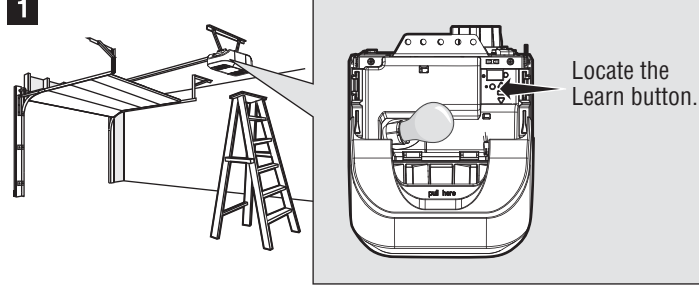
To prevent possible **SERIOUS INJURY** or **DEATH** from a moving gate or garage door:

- ALWAYS keep remote controls out of reach of children. NEVER permit children to operate, or play with remote controls.
- Activate gate or door **ONLY** when it can be seen clearly, is properly adjusted, and there are no obstructions to door travel.
- ALWAYS keep gate or garage door in sight until completely closed. NEVER permit anyone to cross path of moving gate or door.

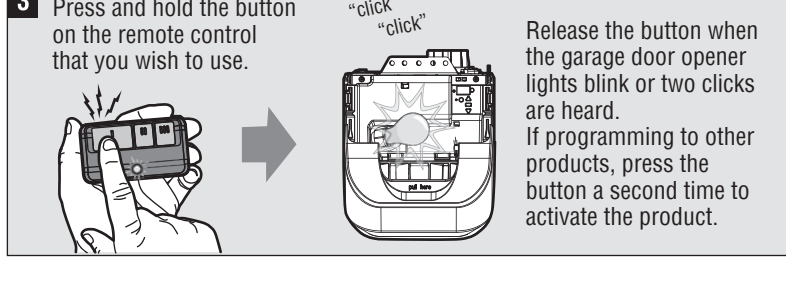
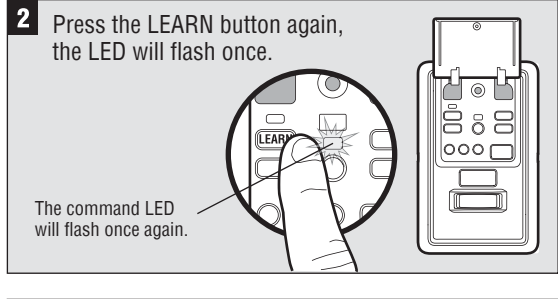
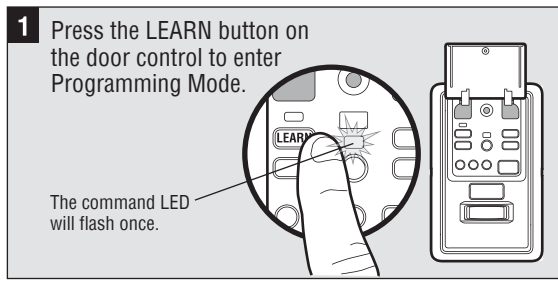


WARNING: This product can expose you to chemicals including lead, which are known to the State of California to cause cancer or birth defects or other reproductive harm. For more information go to www.P65Warnings.ca.gov.

PROGRAM USING THE GARAGE DOOR OPENER

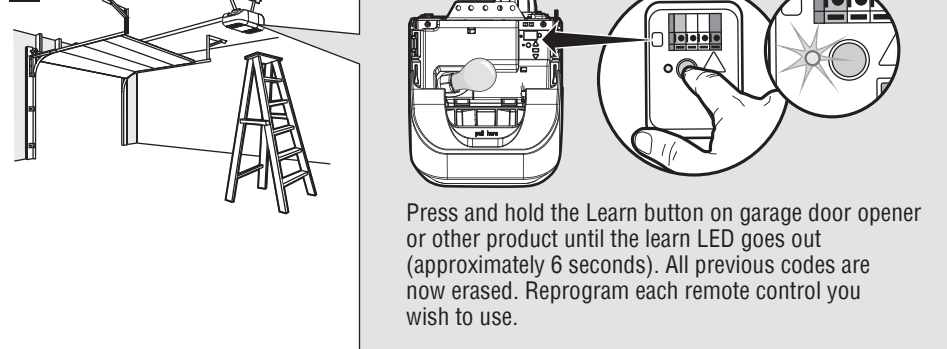


PROGRAM USING THE DOOR CONTROL



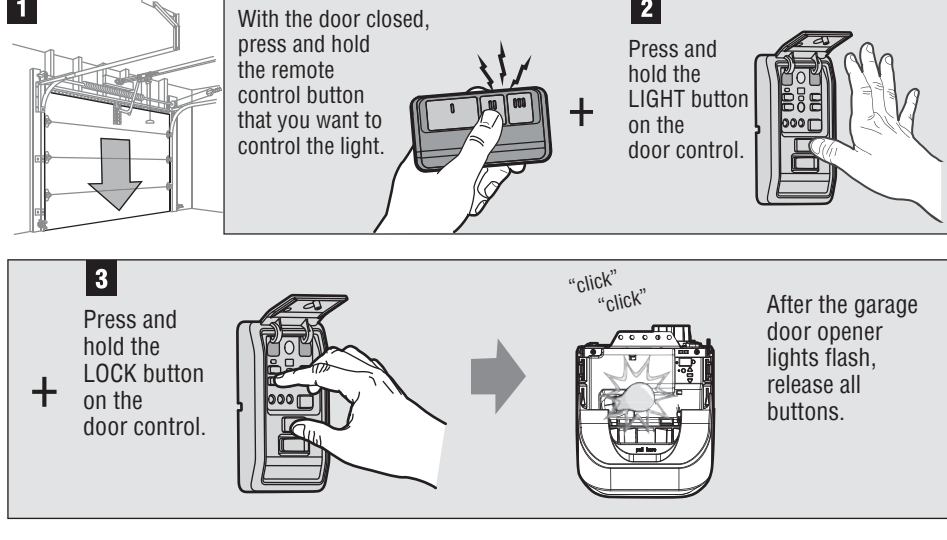
TO ERASE ALL CODES FROM MEMORY

When deactivating any unwanted remote control code, all previous codes will be erased.



TO CONTROL THE GARAGE DOOR OPENER LIGHTS

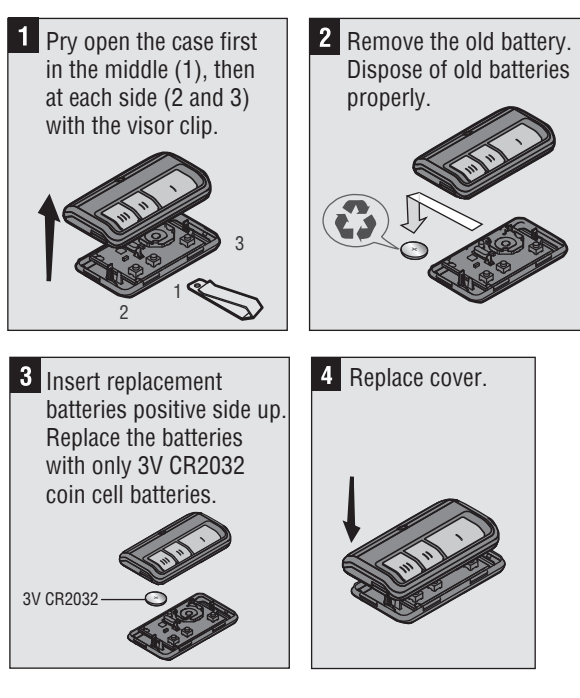
This feature is only available on garage door openers equipped with a multi-function door control and a remote control with more than one button. Not available with external receiver. A remote control button can be programmed to operate the garage door opener lights without opening the door.



Test by pressing the remote control button. The garage door opener lights should turn on or off but the door should not move.

THE REMOTE CONTROL BATTERY

The Lithium battery should produce power for up to 3 years. If the battery is low, the remote control's LED will not flash when the button is pressed. To replace battery:



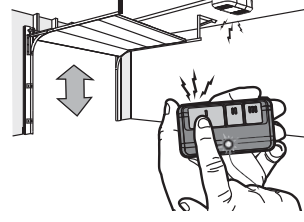
Make: LiftMaster
Model: 891LM, 893LM
Description: Remote Control
Uses 1 3Vdc battery (CR2032)
Country of Origin: Mexico

Remote Control 893LM: IFT #: RCPL18917-2064
Remote Control 891LM: IFT #: RCPL18918-0755
Operation of this equipment is subject to the following two conditions:

(1) This equipment or device may not cause harmful interference and (2) this equipment or device must accept any interference, including that which may cause undesired operation.

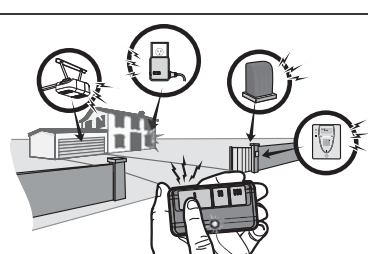
HOW TO USE THE REMOTE CONTROL

Press and hold the button down until the door or gate starts to move. The remote control will operate from up to 3 car lengths away on typical installations. Installations and conditions vary, contact an installing dealer for more information.



3-BUTTON REMOTE CONTROLS

Additional buttons on the remote control can be programmed to operate up to 3 devices such as additional garage door openers, light controls, gate operators or access control systems.



REPLACEMENT PARTS

3V CR2032 Lithium battery	10A20
Visor Clip	29B137

ONE YEAR LIMITED WARRANTY

LiftMaster warrants to the first consumer purchaser of this product that it is free from defect in materials and/or workmanship for a period of 1 year from the date of purchase.